



USER MANUAL

General guide / Guida generale

INDEX - INDICE

<u>Minimum requirements / Requisiti minimi</u>	3
<u>Setup Installation / Installazione Setup</u>	4
<u>Disable Windows Defender / Disabilitare Windows Defender</u>	8
<u>FGTech UPDATER</u>	10
<u>Licence Management / Gestione licenza</u>	12

MINIMUM REQUIREMENTS - REQUISITI MINIMI

(EN) The **EOBD2** software is supported by the following operating systems:

Windows 7 64bit
Windows 10
Windows 11

Hardware characteristics must be equal to or greater than:

- Intel i5 processor or equivalent
- RAM 8GB

(IT) Il software **EOBD2** è supportato dai seguenti sistemi operativi:

Windows 7 64bit
Windows 10
Windows 11

Le caratteristiche hardware devono essere pari o superiori a:

- Processore Intel i5 o equivalente
- RAM 8GB

SETUP INSTALLATION - INSTALLAZIONE SETUP

(EN) The latest updated version of EOBD2 is always available from our website [DOWNLOAD | FG Technology](#)

Download “Download Setup” and save it on your PC.

Double click on the file Setup.exe:



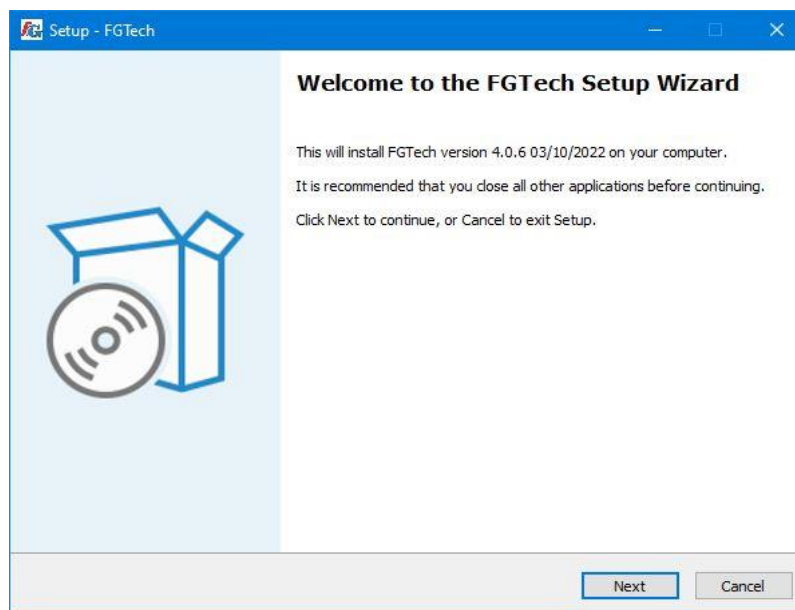
(IT) Nel nostro sito [DOWNLOAD | FG Technology](#) è sempre disponibile l’ultima versione aggiornata del programma EOBD2. Scaricare “Download Setup” e salvarlo sul proprio PC.

Fare doppio click sul file Setup.exe:



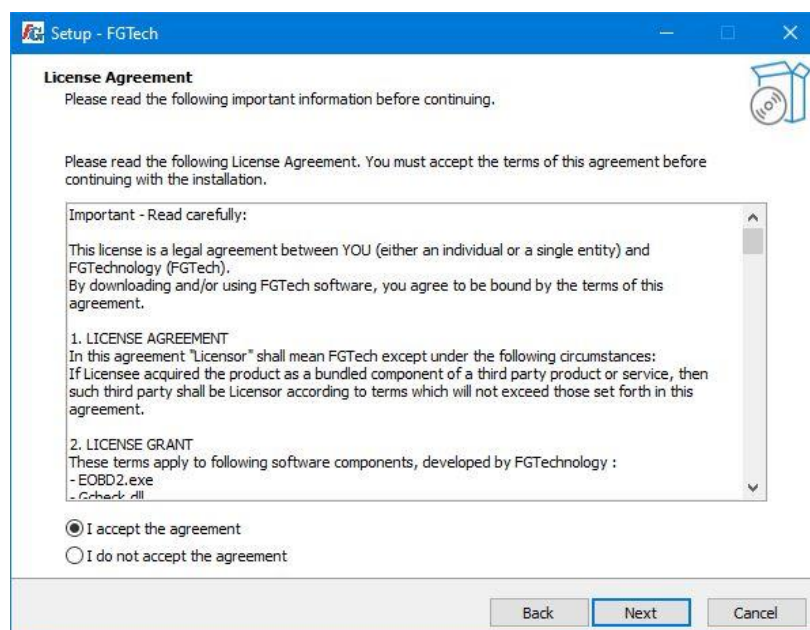
(EN) Click “Next”

(IT) Cliccare “Next”



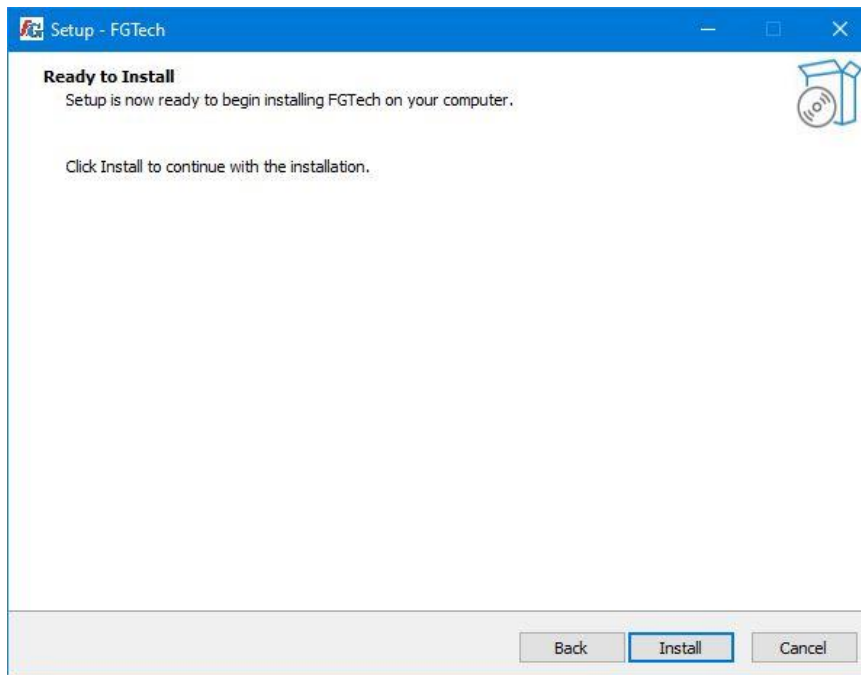
(EN) Read the licence agreement, accept the terms of licence and click “Next”

(IT) Leggere le condizioni di contratto, accettare i termini di licenza e cliccare “Next”



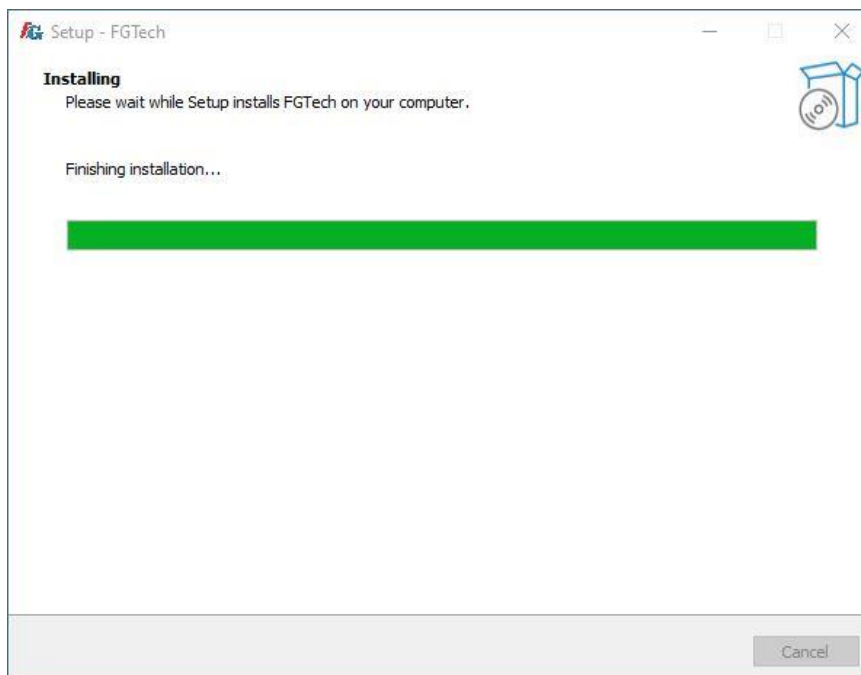
(EN) Click “Install”

(IT) Cliccare “Installa”



(EN) Wait for the installation to be completed:

(IT) Attendere il completamento dell'installazione:



(EN) Now the setup program is installed on your computer, click “Finish”

(IT) Ora il setup del programma è installato sul vostro computer, cliccare “Finish”

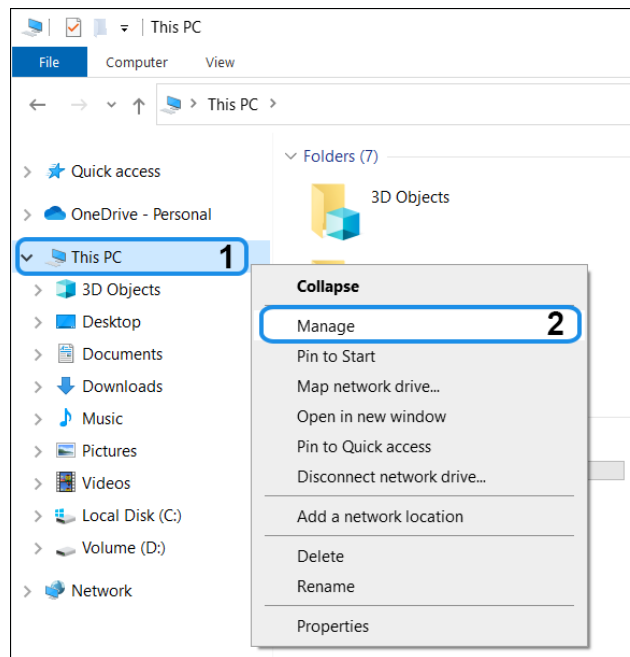
Finish

(EN) Now connect the EOBD2 tool to your computer via USB cable.

It is necessary to install the USB drivers manually using the following procedure:
Open the "**File Explorer**" folder, right-click mouse on "**This PC**" and press on "**Manage**"

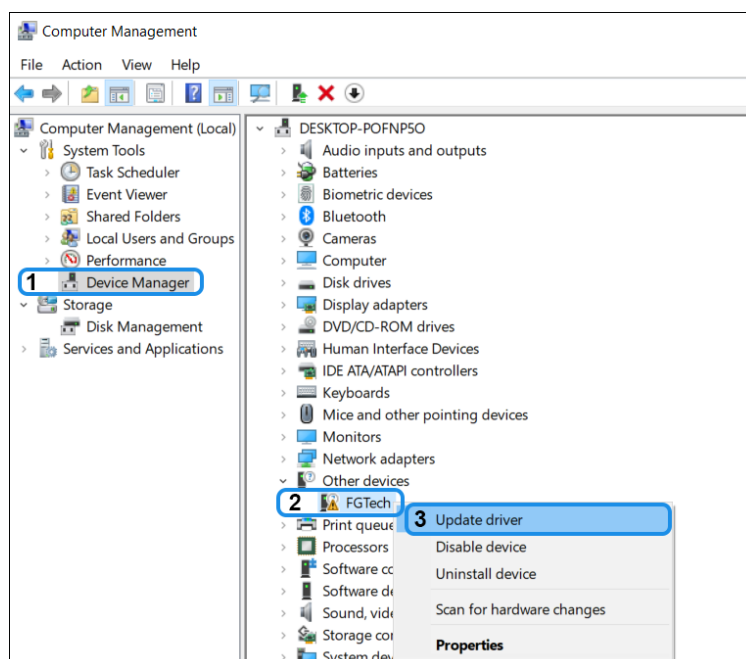
(IT) Ora collegare lo strumento EOBD2 al computer tramite cavo USB.

È necessario installare i driver USB manualmente tramite la seguente procedura:
Aprire la cartella "Esplora file", premere con il tasto destro del mouse su "Questo PC" e premere su "Gestione"



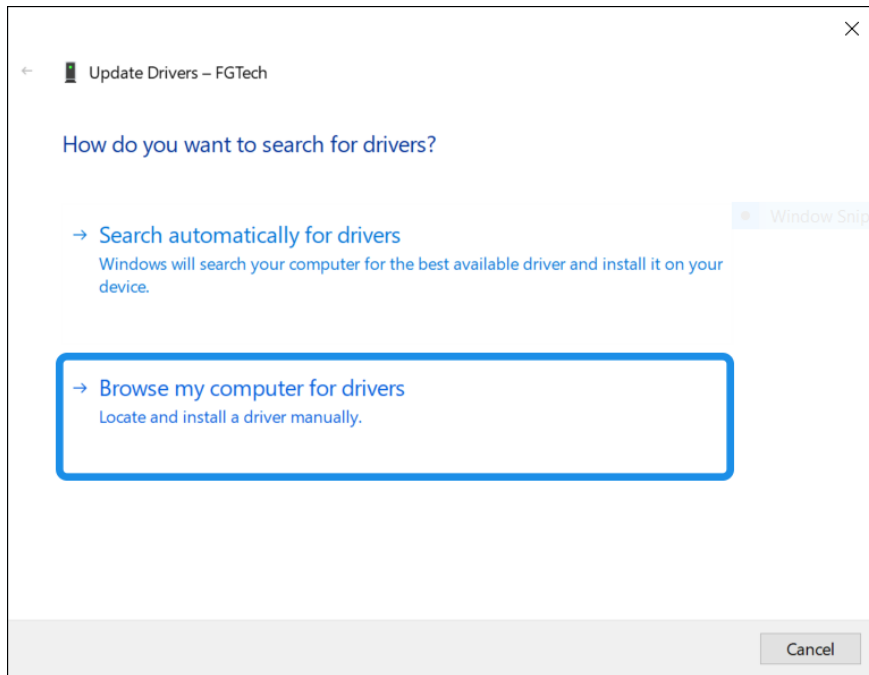
(EN) Select "**Device Manager**" then "**Other devices**", then right-click on "**FGTech**" and press on "**Update driver**"

(IT) Selezionare "Gestione dispositivi" poi "Altri dispositivi", dopodichè tasto destro del mouse su "FGTech" e premere su "Aggiorna driver"



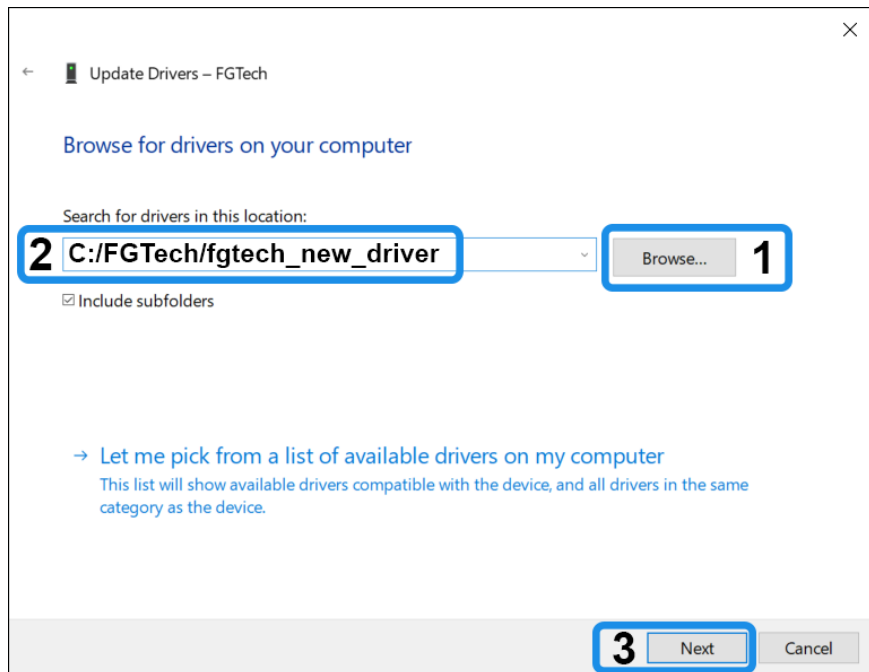
(EN) Select "**Browse my computer for drivers**"

(IT) Selezionare "**Cerca i driver nel computer**"



(EN) Press on "**Browse**" then select the path "**C:/FGTech/fgtech_new_driver**" and press the "**Next**" button

(IT) Premere su "**Sfoggia**" poi selezionare il percorso "**C:/FGTech/fgtech_new_driver**" e premere sul bottone "**Avanti**"



(EN) Now the USB driver has been installed correctly; press on "**Close**"
Install the program via FGTech UPDATER

(IT) Ora il driver USB è stato installato correttamente; premere su "**Chiudi**"
Installare il programma tramite FGTech UPDATER

Close

Disable Windows Defender / Disabilitare Windows Defender

(EN) In some cases with Windows 10/11 operating system the program could be disabled/blocked by Windows Defender.

Follow the procedure to disable Windows protections.

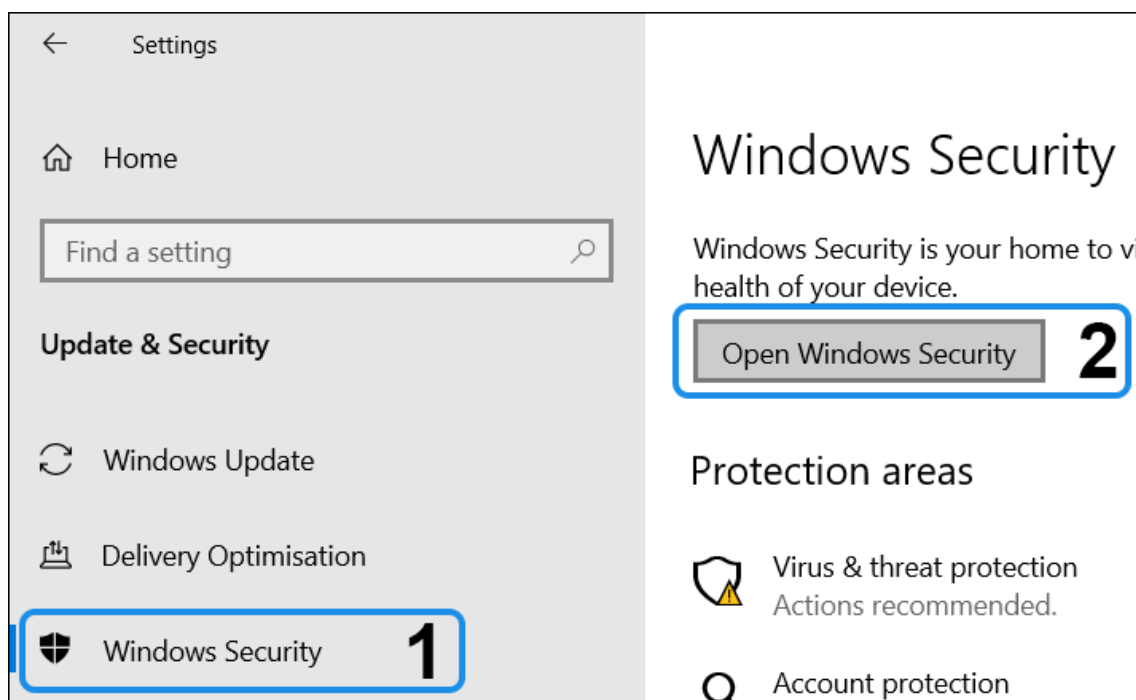
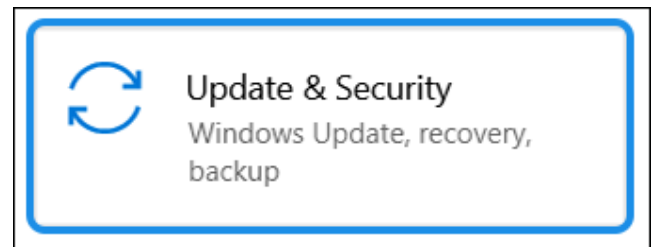
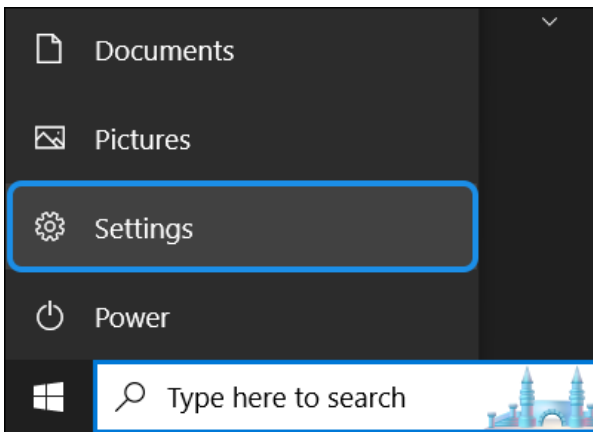
Press on:

- “Start”
- “PC settings”
- “Update and Security”
- “1- Windows Security”
- “2- Open Windows Security”

(IT) In alcuni casi con sistema operativo Windows 10/11 il programma potrebbe essere disattivato/bloccato da Windows Defender. Segui la procedura per Disattivare le protezioni di Windows.

Premere su:

- “Start”
- “Impostazioni PC”
- “Aggiornamento e sicurezza”
- “1- Sicurezza di Windows”
- “2- Apri Sicurezza di Windows”

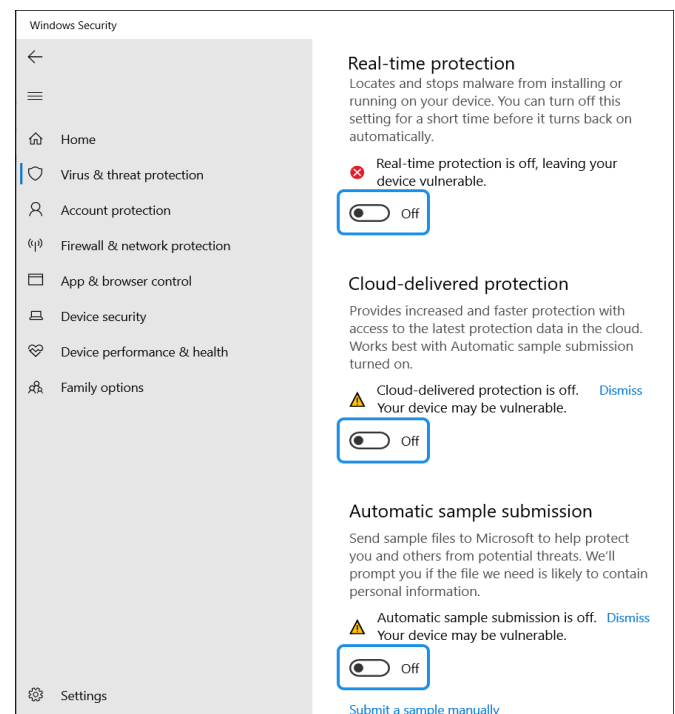
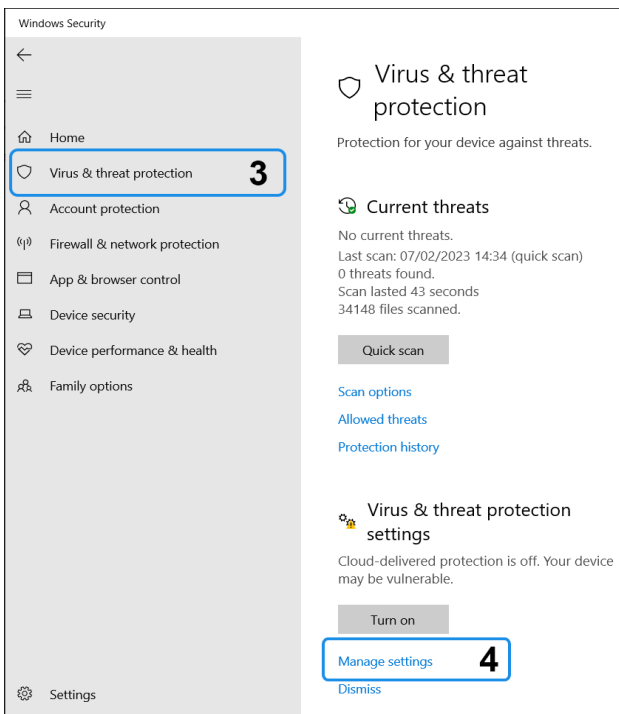


(EN) Press on:

- “3- Virus & threat protection”
- “4- Manage settings”
- “Set the first three options to “OFF” ”

(IT) Premere su:

- “3- Protezione da virus e minacce”
- “4- Gestisci impostazioni”
- “Mettere in “OFF” le prime tre opzioni ”

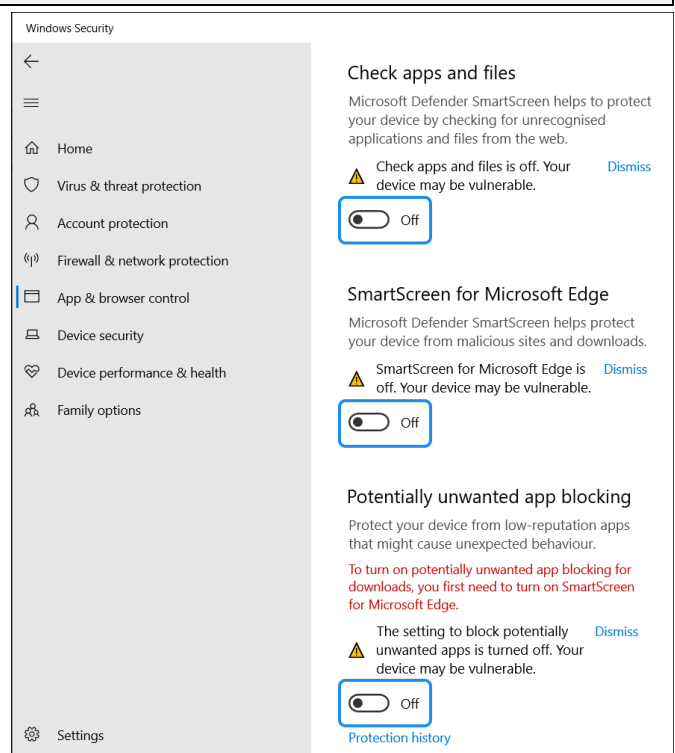
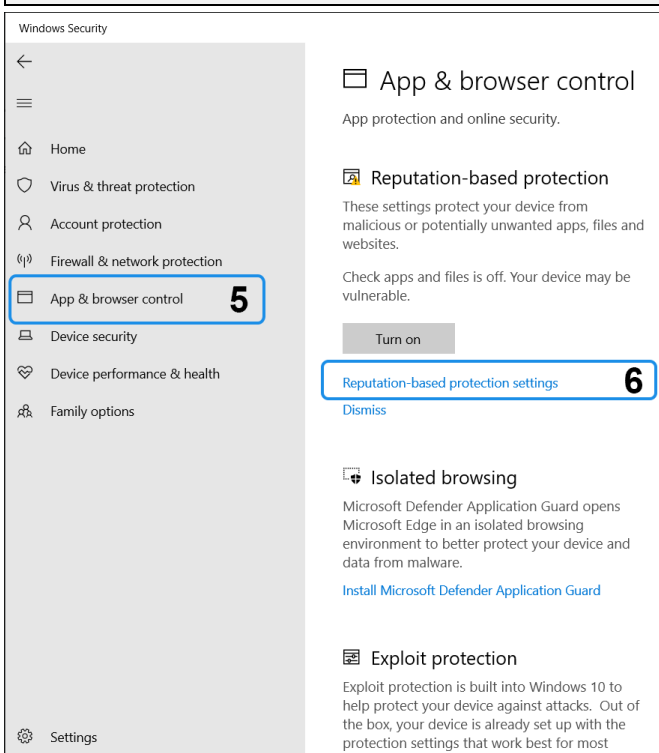


(EN) Finally press on:

- “5- App and browser control”
- “6- Reputation -based protection settings”
- “Set the first three options to “OFF” ”

(IT) Infine premere su:

- “5- Controllo delle app e del browser”
- “6- Impostazioni di protezione basate sulla reputazione”
- “Mettere in “OFF” le prime tre opzioni ”



FGTECH UPDATER

(EN) **FGTech_UPDATER.exe** is used to download the entire software and update the program to the latest version available.

It is also essential to renew the annual user license.

You need to connect the EOBD2 tool to start and use **FGTech_UPDATER**

(IT) **FGTech_UPDATER.exe** serve per scaricare tutto il software e aggiornare il programma all'ultima versione disponibile.

Inoltre è indispensabile per rinnovare la licenza annuale d'uso.

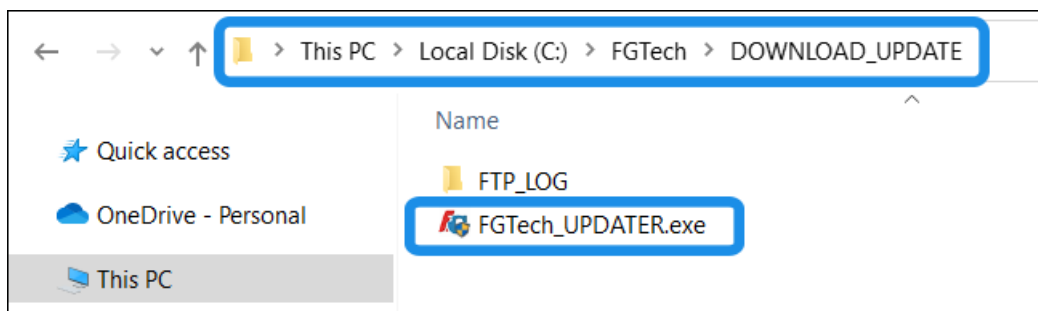
È necessario collegare lo strumento EOBD2 per avviare e utilizzare **FGTech_UPDATER**

(EN) The FGTech_UPDATER executable is located in this path:

- “**This PC**”
- “**Local Disk :C**”
- “**FGTech**”
- “**DOWNLOAD_UPDATE**”

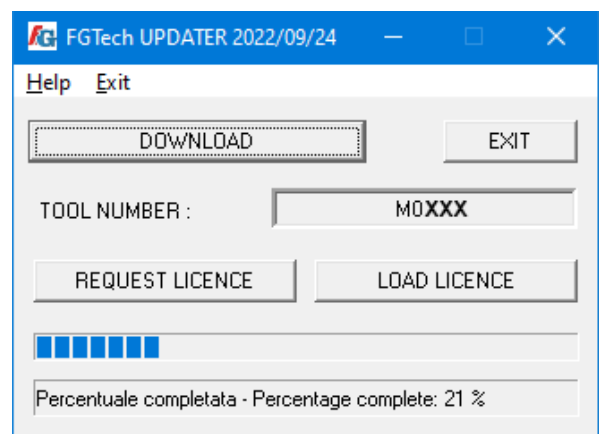
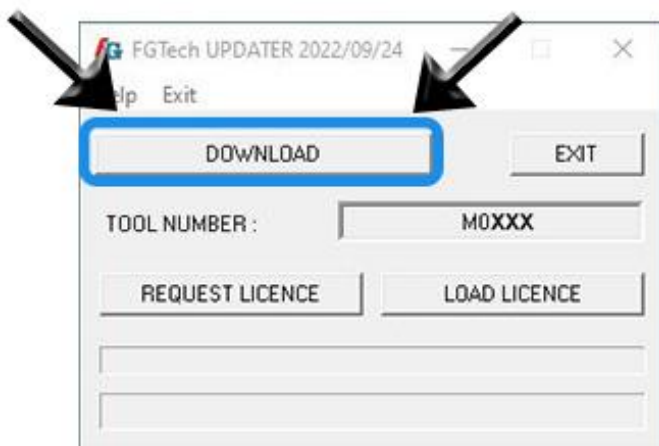
(IT) L'eseguibile FGTech_UPDATER si trova in questo percorso:

- “**Questo PC**”
- “**Disco Locale :C**”
- “**FGTech**”
- “**DOWNLOAD_UPDATE**”



(EN) Click the “**DOWNLOAD**” button, press “**OK**” and wait for a new window to appear.

(IT) Cliccare il pulsante “**DOWNLOAD**”, premere “**OK**” e aspettare che compaia una nuova finestra.



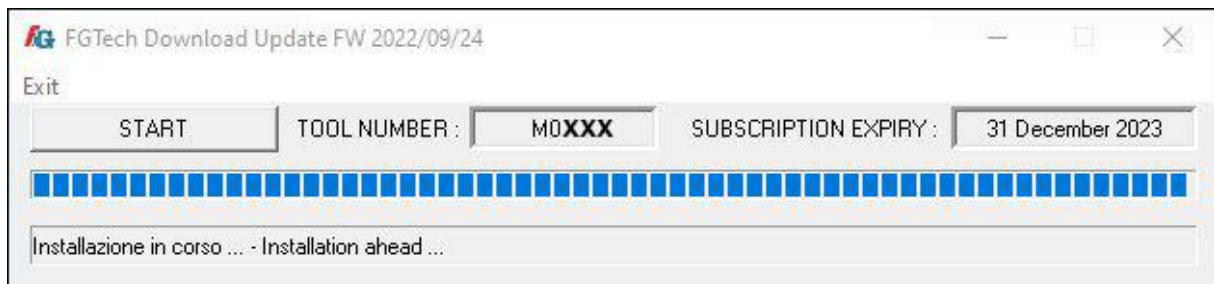
(EN) By clicking the “**START**” button the program will download.

(IT) Cliccando ora il pulsante “**START**” il programma verrà scaricato.



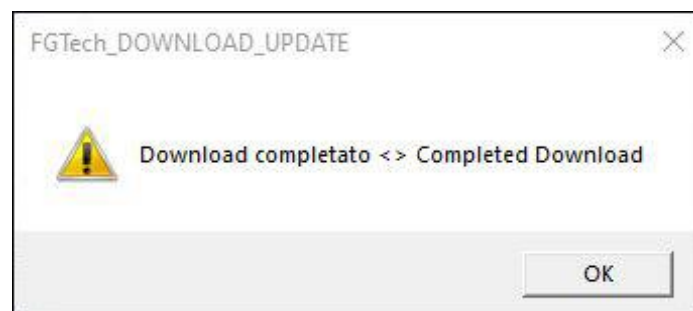
(EN) Wait...

(IT) Attendere...



(EN) At the end the message Download completed will appear.

(IT) Al termine uscirà il messaggio Download completato.



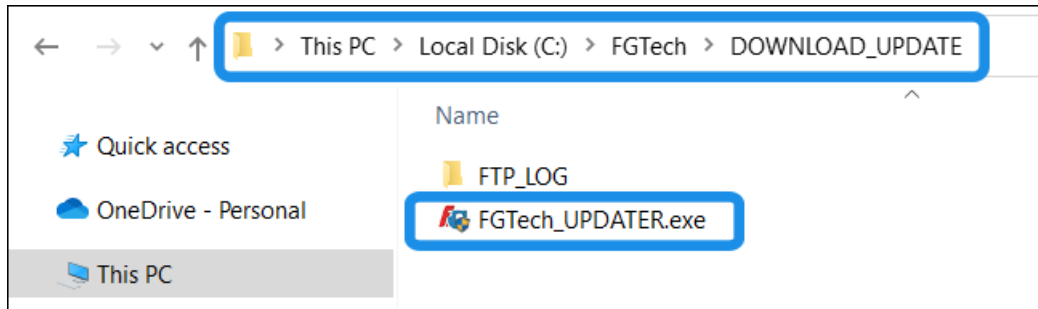
LICENCE MANAGEMENT / GESTIONE LICENZA

(EN) The FGTech_UPDATER executable is located in this path:

- “This PC”
- “Local Disk :C”
- “FGTech ”
- “DOWNLOAD_UPDATE”

(IT) L’eseguibile FGTech_UPDATER si trova in questo percorso:

- “Questo PC”
- “Disco Locale :C”
- “FGTech ”
- “DOWNLOAD_UPDATE ”

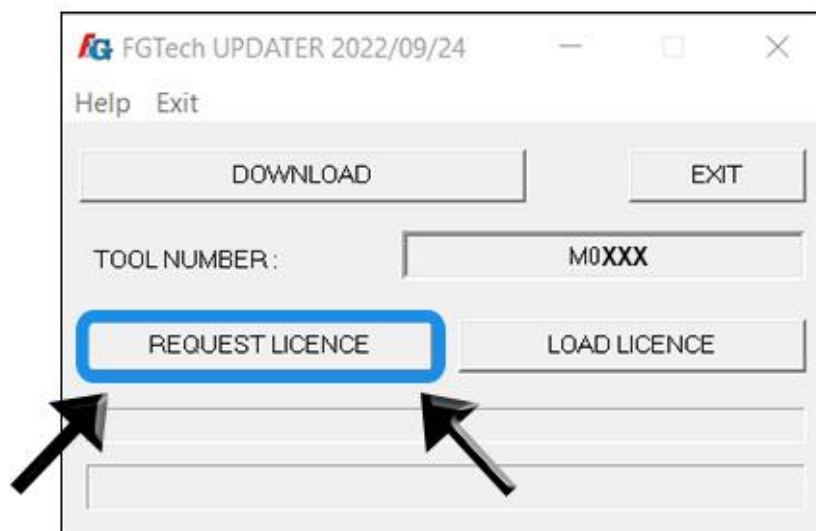


REQUEST LICENCE

RICHIESTA LICENZA

(EN) To renew the license and use the EOBD2 program for a new year, open the FGTech_UPDATER.exe and click the “REQUEST LICENCE” button.

(IT) Per rinnovare la licenza e utilizzare il programma EOBD2 per un nuovo anno, aprire il FGTech_UPDATER.exe e cliccare il tasto “REQUEST LICENCE”.



(EN) A file called **Request_Licence_XXXXXXXXX.bin** will be created in the same folder. Send this file via email to the address:

admin@fgtechnology.eu

Our team will send you the new licence.

(IT) Verrà creato nella stessa cartella un file chiamato **Request_Licence_XXXXXXXXX.bin** da inviare direttamente tramite email all’indirizzo: admin@fgtechnology.eu

Il nostro team vi invierà la nuova licenza.

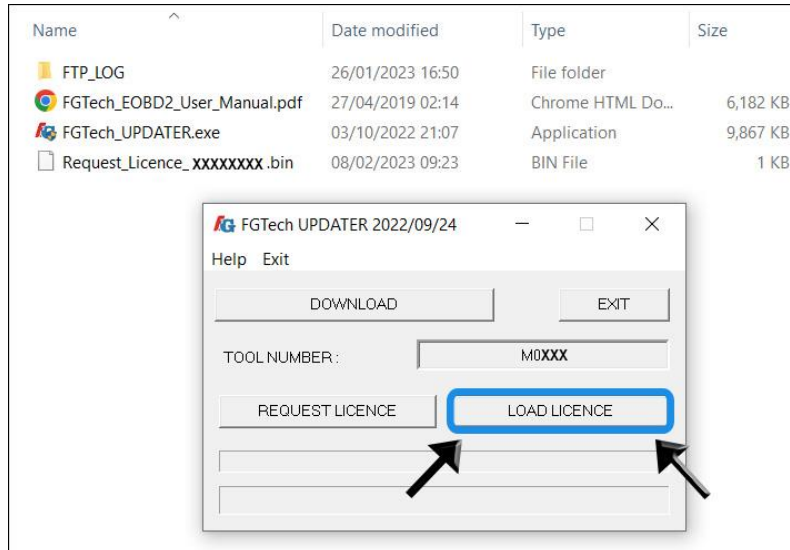


LOAD NEW LICENCE

CARICARE UNA NUOVA LICENZA

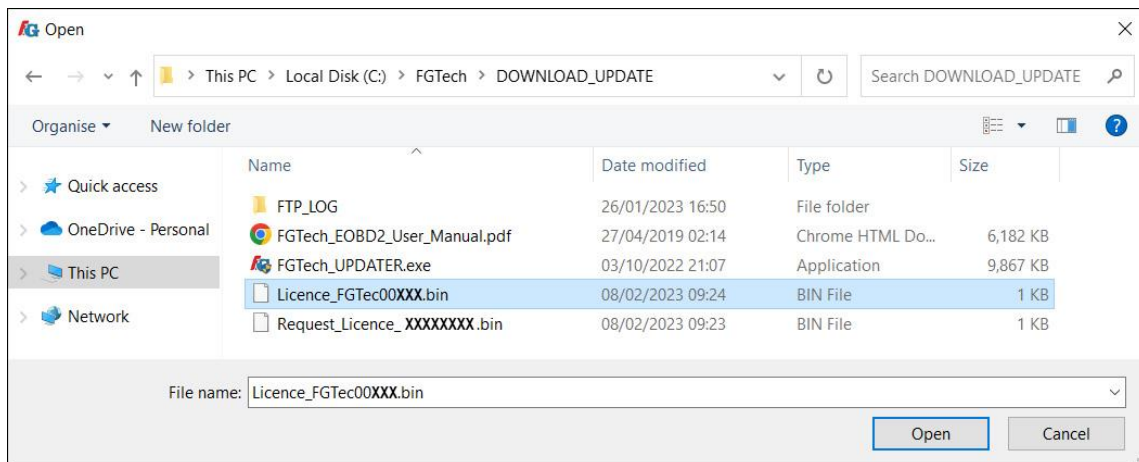
(EN) To load the new license, click the button “LOAD LICENCE”.

(IT) Per caricare la nuova licenza, cliccare il pulsante “LOAD LICENCE”.



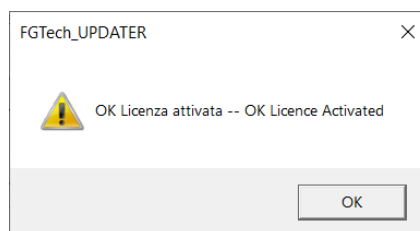
(EN) Select the file **Licence_FGTecxxxxx.bin** sent by the FGTECH administration.

(IT) Selezionare il file **Licence_FGTecxxxxx.bin** inviato dal reparto amministrativo FGTECH.



(EN) The message OK LICENSE ACTIVE appears.

(IT) Apparirà il messaggio OK LICENZA ATTIVA.



(EN) Perform a download update to update the software.

(IT) Effettuare un download update per aggiornare il software.